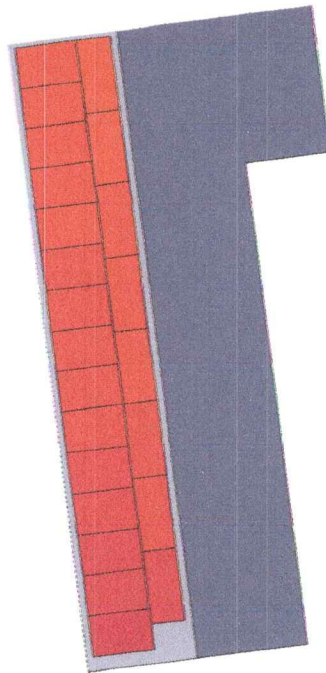


EnergyPal

Energypal
(800) 990-3725
EnergyPal.com

Eugene Goodwin

19 Hadleigh Road, Windham, NH, 03087, US



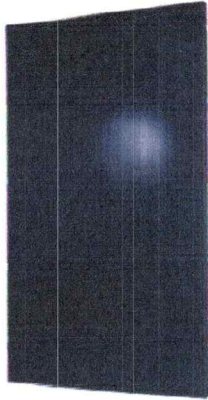
9.775 kW Q Cells Q.TRON BLK M-G2+ 425 Solar Panels

Cash Purchase

Installed by Team Sunshine



Solar Proposal
Apr 23, 2024



Solar Panels

Generate Clean Power for Decades

Offset Rising Utility Rates

Use Limited Time Incentives

Your Energy Needs!

Utility:	Liberty Utilities (Granite State Electric Co)
Historical Usage:	17,591 kWh/year
Additional Usage:	0 kWh/year
Projected Usage:	17,591 kWh/year

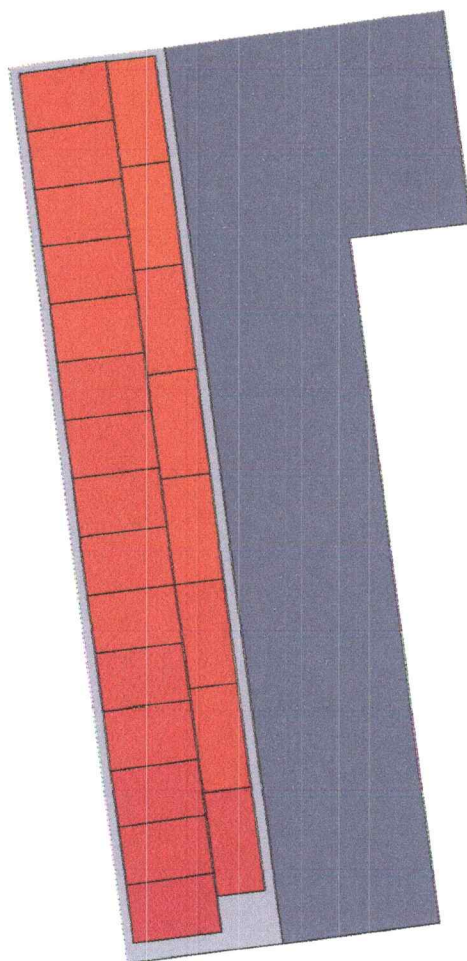
System Design



Est. Year 1
Production
9,884 kWh

Est. Energy Offset
56 %

Solar System Size
9.78 kW

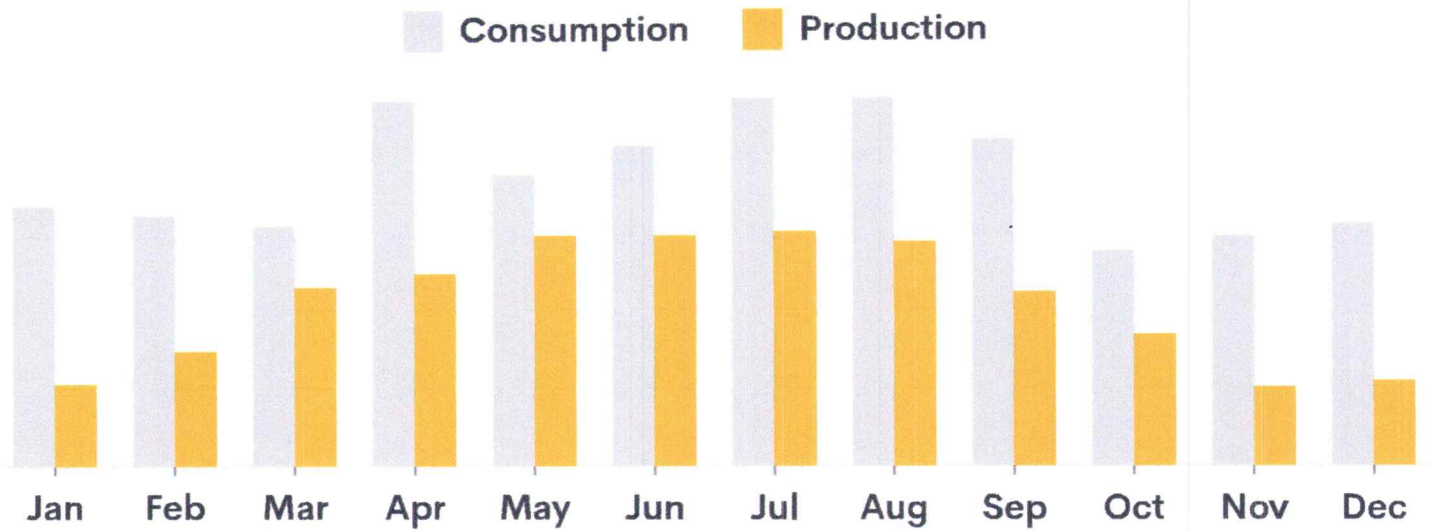


Panel

Q Cells Q.TRON BLK M-G2+ 425

x23

Energy Offset



Consumption:

Your energy usage in year 1 in kilowatt hours (kWh)

Production:

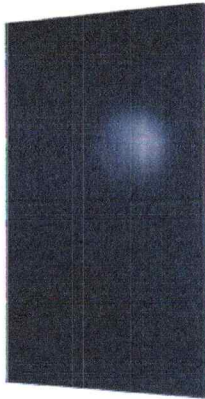
Estimated solar energy production in year 1 in kilowatt hours (kWh)

The system design may change based on a detailed engineering site audit. Actual system production, offset and savings will vary based on the final system size, design, configuration, utility rates, applicable rebates, system location, local climate, and your family's energy usage.

Installation



EnergyPal has secured you industry-leading panels, inverters, batteries, financing that will be installed by Team Sunshine. Here's why we recommend your chosen system:



Panel: Q Cells Q.TRON BLK M-G2+ 425

- Q.TRON BLK M-G2+ are high-wattage panels with a sleek all-black aesthetic
- Incredible pricing and quality from the global no. 1 solar cell producer
- Warrantied to be 90.58% original efficiency at year 25, a 40% lower degradation rate than Industry Standard.



Inverter: Enphase IQ8M Microinverter

- Microinverter provides solar panel-level AC conversion, great for partial shading
- [Enphase](#) first commercialized microinverters 2006, remains the leader today



Installer: Team Sunshine

- Reputable NE Installer with a wide coverage area.
- Listed on Forbes Home as one of the 2023 Top Solar Installers in MA.
- Wide array of standard & premium panels to suit all requirements.

Once you review and agree to this energy system offer, we'll arrange the next steps of a site audit, planning and permitting with your chosen installation team.

EnergyPal Lifetime Customer Service Promise

EnergyPal is with you every step of the way and available 7 days a week via phone, email and messaging. We promise to work on your behalf to keep your install on-track and help resolve unforeseen issues with your project, all at no cost to you.

EnergyPal Referral Network

Free to participate! Start earning cash rewards simply by referring friends that go solar. The more you refer, the more you can earn when others install solar. Also, when your referrals refer others that go solar, you'll earn as well for no work!

Next Steps



Eugene's System

9.775 kW Q Cells Q.TRON BLK M-G2+ 425 Solar Panels
Cash with Team Sunshine Installation

- 1 Sign Documents
- 2 Review & Refer
- 3 Site Survey & Plans
- 4 Permits
- 5 Install
- 6 System Activation

This document is for illustrative purposes only. In the event of a discrepancy between this document and your final signed solar contract, your signed solar contract will take precedence. Equipment, roof penetration, performance, and workmanship warranties, if applicable, are provided by the associated Manufacturers, installers and financiers, and not EnergyPal.

Forecasted Value



Year 1
Implied Utility Rate*
\$0.207 per kWh

Lifetime
Implied Solar Rate*
\$0.129 per kWh

Payback Period
12.2 years

UTILITY

MONTH 1

25-YEAR

Utility Payments

\$303

\$155,456

SOLAR

MONTH 1

25-YEAR

Utility Payments

\$149

\$75,242

+ Cash Payment

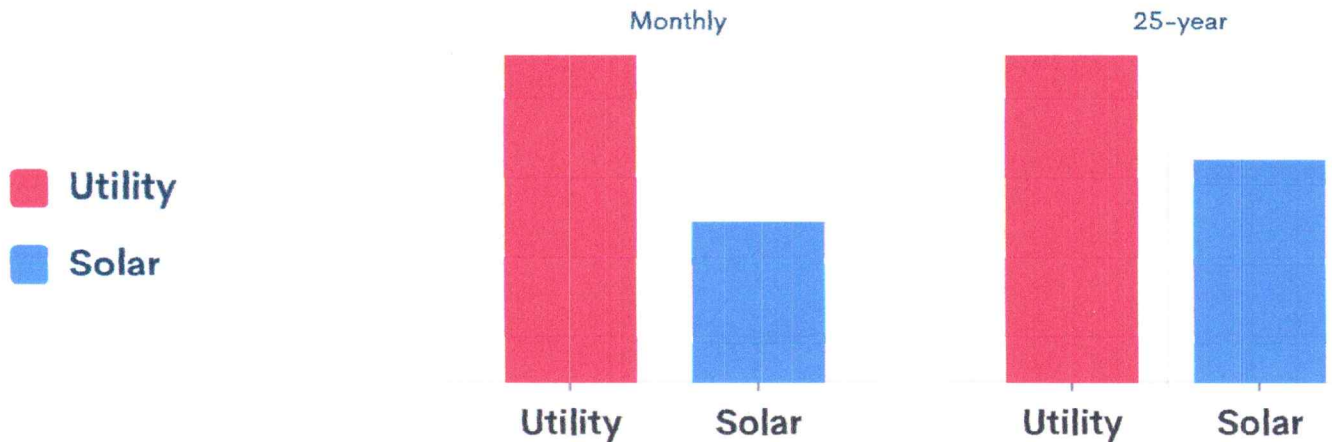
-

\$30,283

Total Payments

\$149

\$105,525



**PROPOSED SAVINGS

†AVG MONTHLY

25-YEAR

Total Savings

\$155

\$49,930

Forecasted Value is based on expected future utility rates provided by public and third party databases.

* EnergyPal estimates your year 1 energy rate with your utility by dividing your estimated annual utility bill by your estimated annual energy consumption. Similarly, we calculate your EnergyPal rate by dividing your solar bill by your system's estimated production.

** Proposed savings are estimates, based on predicted system production, incentive availability, financing terms, your expected usage and annual utility rate increase of 3.90%. Actual results may be higher or lower than the estimates shown due to unanticipated seasonal/weather effects, changes to your usage patterns, changes to system solar access, actual utility rate increases, or grid disruptions.

† Estimated based on year 1 utility and solar payments, divided by 12 months. Actual months will vary due to seasonality, finance terms and usage patterns.

Your Purchase



Purchase Cash

\$30,283 after incentives*

Total \$30,283 upfront after discounts before incentives*

Payment Terms

10% of Total Price Due at Proposal Signing.

40% of Total Price Due at Equipment order.

50% or Balance of Contract Due at Construction completion.

Incentives*

*Incentives are calculated based on currently available programs assuming customer will complete all necessary steps, have appropriate tax liability and be accepted into open programs to take full advantage of the listed incentives. EnergyPal cannot guarantee customer will qualify for or receive the incentives.



Your installer is Team Sunshine Construction



Why EnergyPal Recommends:

- Reputable NE Installer with a wide coverage area.
- Listed on Forbes Home as one of the 2023 Top Solar Installers in MA.
- Wide array of standard & premium panels to suit all requirements.

Installer Strengths:

- Option of 25 year Workmanship, Roof Penetration and Production Warranties.
- Access to an array of financiers with very competitive options.
- 30 to 60 day average Install timelines (depending on AHJ).
- Focus on quality installs & very high customer satisfaction.

Our Concerns:

- None at this time.

Reviews:

- 4.7 ★★★★★ on [Google](#)

Headquarters:

24 Spice St, Boston, MA 02129, US

Service Area:

CT, MA, ME, NH, NJ, RI, VT

Equipment Summary



Solar Panel

Q Cells Q.TRON BLK M-G2+ 425

Backsheet Color: Black

Rating: 425W

[Q Cells Q.TRON BLK M-G2+ 425 panel datasheet](#)



Inverter

Enphase IQ8M Microinverter

Type: Micro

Output (AC) Rating: 325W

[Enphase IQ8 Series](#)

